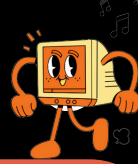


MENU

BE MUSIC LABEL SERVICES



STARTERS

CONSULTATION

- A 30 - minute consultation with a BE Music sync coordinator to review the business side of your music career!

AUDIT

- A health check and diagnosis of your music business, structure, and goals.

SPLIT SHEET DATA COLLECTION (PER WRITER)

- Outreach service to collect 3rd party writer P.R.O. information and signatures. Outreach limited to four times in one month
- **SPLIT SHEET:** the document determining ownership and royalty shares for a song among its creators.

BEMP METADATA SYNC PACKAGE ADD-ON (ONE-TIME FEE)

- Metadata management administered by BE Music
- Includes set up and maintenance.
- Dedicated artist sync profile channel
- Secured storage of all songs and metadata
- Access to high-level briefs
- Delivered digitally

CATALOG MANAGEMENT

CATALOG METADATA MANAGEMENT (PER SONG)

- Accurate music metadata properly documented, sorted, and identified per song
- Spreadsheet deliverables
- **METADATA:** Info attached to a song file, including artist name, album title, track duration, and genre.

CATALOG METADATA MANAGEMENT (BULK) UP TO 25 SONGS

- Accurate music metadata properly documented, sorted, and identified for multiple songs

ROYALTY COLLECTION SET UP

MLC SET UP **Mechanical Licensing Collective**

Set up mechanical royalties account

- **MLC:** Collect mechanical royalties from all DSPs
- **History:** Congress established this organization after the Music Modernization Act in 2018
- Every DSP pays the MLC, and the MLC pays out the rights holders.
- **Mechanical Royalties:** are fees paid to songwriters (publishing side of the song) for streams, downloads, or purchases of your song

SOUNDEXCHANGE SET UP

Set up digital performance royalties account

- **SoundExchange:** an organization that collects and distributes digital performance royalties on digital platforms like streaming services and Internet radio.
- **Digital Royalties** -are fees paid to record labels and recording artists for non-interactive radio (platforms on which you can't change the channel), such as Pandora, XM Radio, etc.

P.R.O WRITER & PUBLISHER REGISTRATION SET UP

- Set up performance royalties account
- **Performance Royalties** - are fees paid when a song is played in public or on digital platforms such as Spotify.
- Set Up - BMI Writer & Pub
- Set Up - BMI Writer Only
- Set Up - ASCAP Writer & Pub
- Set Up - ASCAP Writer Only
- Set Up - BMI Publisher Account ONLY
- Set Up - ASCAP Publisher Only

SONG ROYALTY REGISTRATION

MLC SONG REGISTRATION

- Blanket Mechanical royalties song registration (Per Song)

SOUNDEXCHANGE SONG REGISTRATION

- Digital performance royalties song registration (Per Song)

PRO SONG REGISTRATION

- Public performance royalties song registration (Per Song)

COPYRIGHT REGISTRATION

SOLO COPYRIGHT REGISTRATION

- Single Author (Per Song)

CO COPYRIGHT REGISTRATION

- Multiple Authors (Per Song)

- **Copyright Registration** with the US government is essential to confirm ownership of your intellectual property (your song), provide the necessary documentation for legal actions, and validate your music's legal ownership in the US

GROWTH & DISTRIBUTION

ARTIST GROWTH: STATS SET UP & REPORTING

- Track digital media progress by receiving a statistic report of all social platforms and DSPs
- quarterly reports sent via email (4 per year)
- Additional reports available upon request

DIGITAL DISTRIBUTION SET UP

- Digital distribution via distributor of choice

BE MUSIC DISTRIBUTION

- Worldwide distribution via BE Music

ROYALTY PAYMENT MAP

